



Kate Shooltz
Green Wall Artist

preserved moss walls
and biophilic designs



Kate the Earthling

Kate Shooltz is a Philadelphia-based moss artist known as Kate the Earthling. Inspired by the natural world and her passion for the Earth, her creations promote a biophilic lifestyle enriched by nature. By using only preserved natural elements, her creations require no water or sunlight, yet remain green and soft for years to come. Using preserved moss and plants ensure that her creations are accessible to everyone, regardless of their green thumb or environment.

Kate takes pride in creating unique pieces for each of her clients, never making the same design twice. With the help of her local frame builders, every natural element is arranged solely by Kate in her Philadelphia art studio - each patch of moss and individual fern placed with intention and care.

Since 2018, Kate the Earthling has created one-of-a-kind moss walls for clients all over the United States in residential and commercial spaces. Her work has been featured on Bravo TV, in Italian Magazine *Biophilia Natural Trend* and in various online publications such as PureWow.



Benefits of Biophilic Design

Biophilia, a love of life, is the notion that humans possess an innate connection with nature and other natural systems. Biophilic Design aims to provide these connections between humans and nature within the built environment.

Studies have shown that we are in better physical, emotional and psychological health when we have regular interactions with nature. With much of our time spent indoors, preserved moss walls and biophilic art can help provide that interaction and its associated benefits.

Some of the benefits include:

- Increased mood + feeling of well-being
- Improved productivity + lower employee absenteeism in work settings
- Increased engagement
- Reduced stress levels
- Mental restoration + reduced fatigue
- Faster healing times

Preserved Plants

Preserved Plants are real plants that have been harvested and treated to remain soft and green. This process involves replacing the plant's water with a glycerine solution. Unlike dried plants, preserved plants are soft to the touch and do not have the waxy plastic look of an artificial plant.

Care and Maintenance

Due to the preservation process these plants require no watering or sunlight whatsoever. They are created for indoor display only as they cannot be exposed to moisture, which includes environments of high humidity, or prolonged intense UV light. On occasion, the artwork may need gentle dusting which can be done using a compressed air duster or soft brush.

How long will they last?

In proper conditions preserved moss and plants can last for several years with no maintenance before needing potential touch ups. Their longevity depends on what plants are used, ambient moisture of the environment, exposure to intense UV light and the level of human interaction.



Materials & Sourcing

When possible, all plant material used is sourced within the United States from sustainable moss farms located in Florida and North Carolina. Each design is created using sheet, mood, pole and reindeer mosses – a collection of varieties that showcase a wide range of textures and green tones. In addition to moss, preserved ferns and hanging amaranthus are used, as well as other accent pieces depending on the design. Upon request a design may incorporate faux elements such as silk flowers or artificial succulents



Mood Moss



Pole Moss



Reindeer Moss



Sheet Moss





Amaranthus Chandelier in lobby of Bryant St NE in Washington, D.C.

Commission Process

1. Project Discussion

Introductory conversation to go over initial ideas, project parameters, budget, design inspiration, etc.

2. Design Sketch

One or more hand drawn concept sketches based on initial Project Discussion.



Project Concept Sketch

3. Pricing + Commission Contract

Pricing quote is prepared based on final agreed upon Design Sketch. Price quote includes all materials, labor, delivery and any installation costs. Once pricing is approved by the Client the Commission Contract is drawn up with details of the final design, pricing, completion date and delivery/installation details.

4. Project Creation

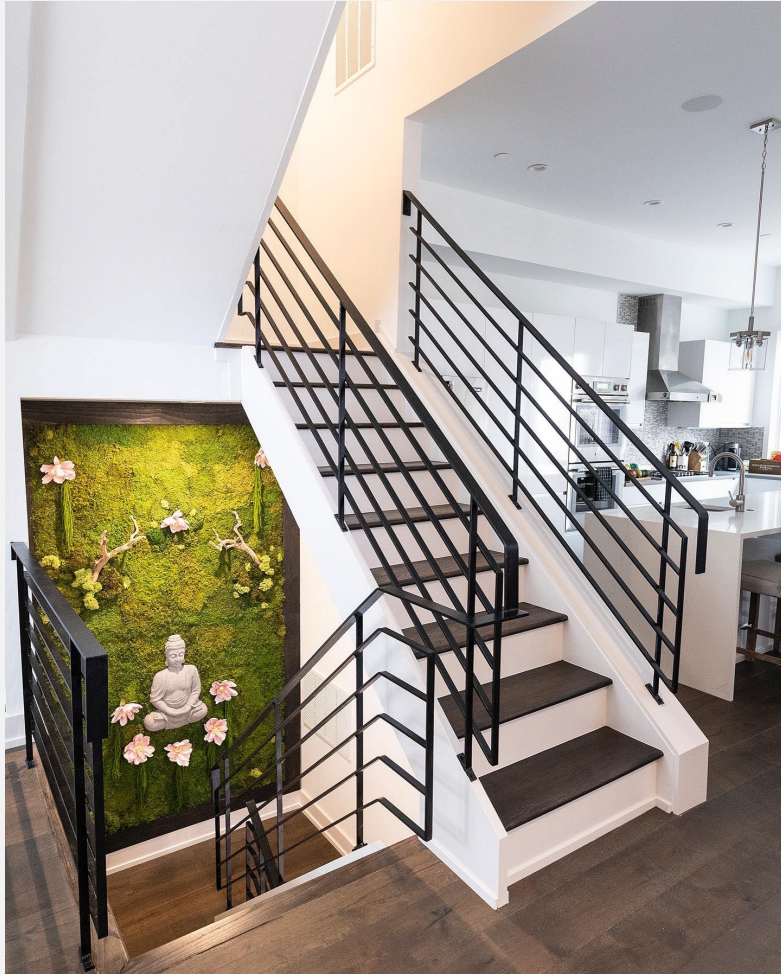
Project is fabricated at the Kate the Earthling studio in Philadelphia. Time to complete depends on the scope of work.

5. Delivery and Installation

Final project can be shipped to Client or delivered by Kate the Earthling. Installation services offered depending on the project.

Sample of Residential Projects

To browse the full Kate the Earthling portfolio please visit www.katetheearthling.com/custom-commissions



Philadelphia, PA



Valley Village, CA



New Canaan, CT

Sample of Commercial Projects

To browse the full Kate the Earthling portfolio please visit www.katetheearthling.com/custom-commissions



Pure Sweets & Co.
Philadelphia, PA



Mimeo
New York, NY



Thirty Hair
Columbia, MD



A final note.

Kate the Earthling was born from a love of nature. My mission as an artist is to share that love through my work, creating one-of-a-kind pieces that bring the beauty and benefits of the outdoors in. Each creation I design and bring to life is done with passion to ensure your artwork is truly unique and will not be just another green wall.

If you are looking for a personalized experience and artistic touch, I look forward to working with you to create something meaningful.

Thank you,

Kate



Kate the Earthling

Kate Shooltz

703-798-8687

katetheearthling@gmail.com

 Instagram: [@k8theearthling](https://www.instagram.com/k8theearthling)

For more information and my full project portfolio
please visit www.katetheearthling.com